



Piedmont

MEASURE L BOND UPDATE

December 5, 2017

Measure L – Overview

- Phase 2 Project Update
- Phase 3 Project Update
- Phase 4 Project Update
- Program Schedule Review
- Presentations
 - Ruskin FIS
 - Piedmont FIS
 - Piedmont Parking Lot

Measure L – Phase 2 Projects

- Vinci Park Elementary School - FIS
 - Started construction the week of November 27, 2017
 - Completion March 2018
 - Exterior Canopy
 - Submitted to CGS (California Geological Survey) November 2017
 - DSA December 2017
 - Purchase/install January/February 2018
- Central Kitchen
 - The Punch list is completed. The paving of the parking lot (seal coat & stripping) will be completed over the holiday break.
- Pavement Rehabilitation – Piedmont Middle School
 - Submitted to the City of San Jose for review
 - Submit to DSA on December 6, 2017
 - Bid early February 2018
 - Construction starts June 2018

Measure L – Phase 3 Projects

- Laneview FIS Project – Project is on schedule



Measure L – Phase 3 Projects



ADA upgrades to path of travel

Measure L – Phase 3 Projects

- Majestic Way FIS Project – Project is on schedule



Measure L – Phase 3 Projects

- FIS Furniture - Vinci Park
 - Reviewing submittal with site
 - Order by December 2017
 - Furniture delivery March 2018
- FIS Furniture – Laneview & Majestic Way
 - Quote finalized
 - Order furniture week of December 2017
 - Furniture delivery mid February 2018

Measure L – Phase 4 Projects

- Modernization Projects
 - Ruskin Elementary School - FIS
 - Submitted to DSA - November 27, 2017
 - Piedmont Middle School - FIS
 - Submitted to DSA - November 13, 2017
 - Brooktree Elementary School
 - Submitted to DSA - November 27, 2017
 - Cherrywood Elementary School
 - Submit to DSA - December 12, 2017
 - Toyon Elementary School
 - Meet with DSA to review structural upgrades in December
 - Submit to DSA - TBD
 - Morrill Middle School
 - Submit to DSA – December 8, 2017
 - AV @ MPR Elementary Schools
 - Installation of AV equipment by the end of November 2017

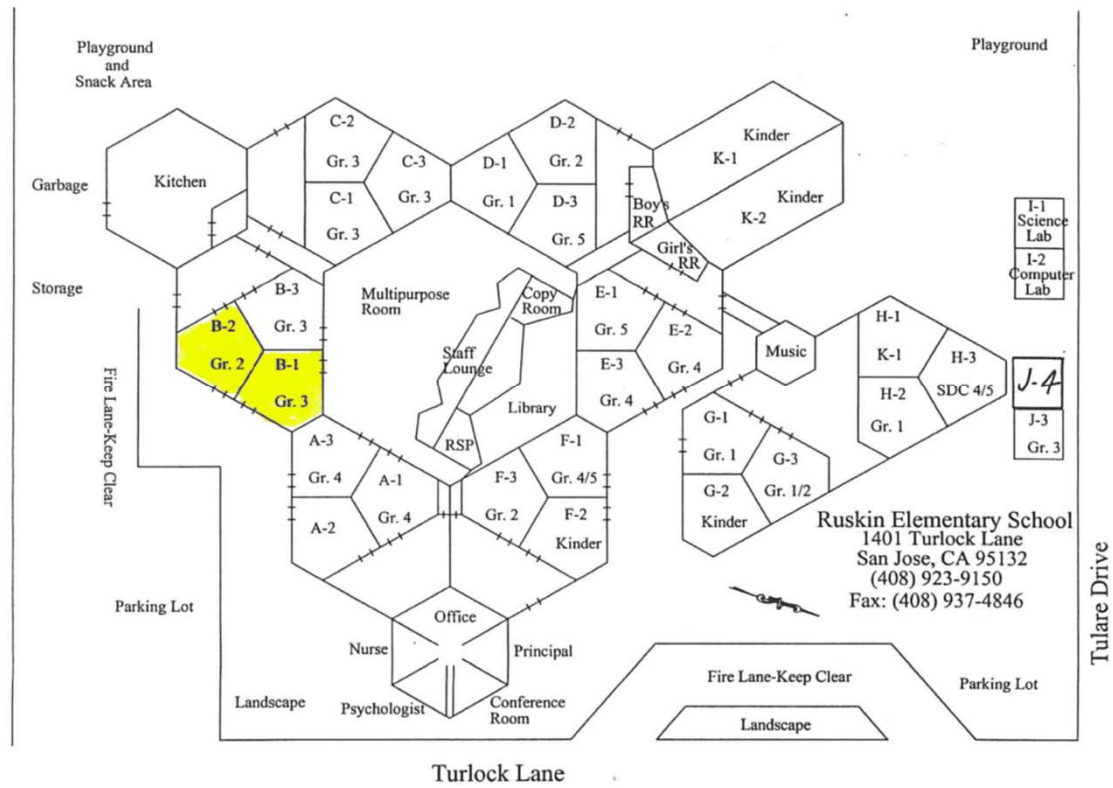
Presentations

- Ruskin FIS
- Piedmont FIS
- Piedmont Parking Lot



RUSKIN ELEMENTARY SCHOOL
FLEXIBLE INSTRUCTION SPACE (FIS) AND CAMPUS MODERNIZATIONS
BERRYESSA UNION SCHOOL DISTRICT

REVIEW: FIS LOCATION



REVIEW: FIS THEME

ECOSYSTEM is determined to be the theme of Ruskin FIS. We attributed one California ecosystem to each of the four program learning spaces.



RESEARCH – DESERT



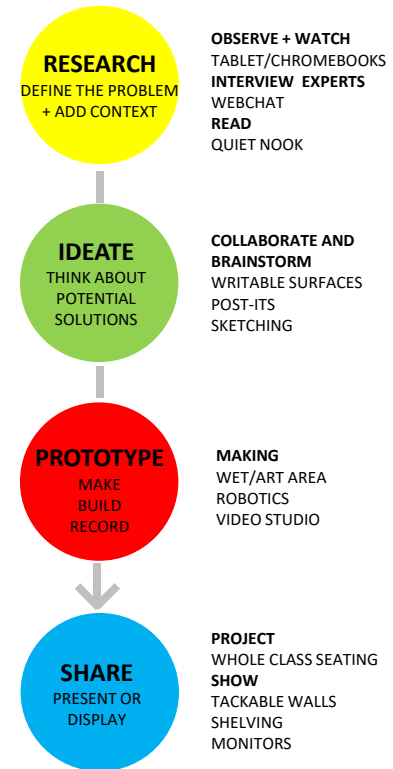
PROTOTYPE – MARINE



IDEATE – FOREST

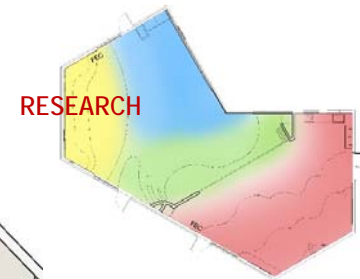
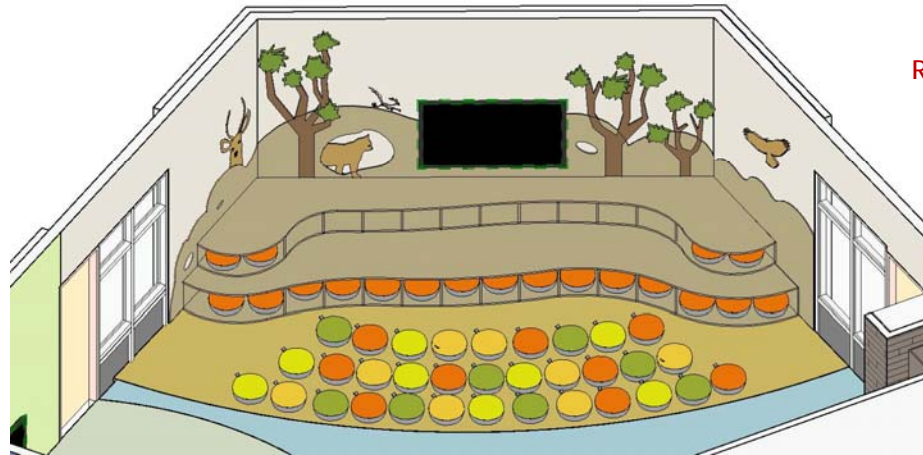


SHARE – FRESH WATER



REVIEW: FIS DESIGN

RESEARCH – HIGH DESERT



Wall panels cut to customized shapes, illustrating desert scenes with animals



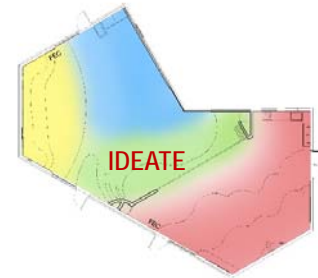
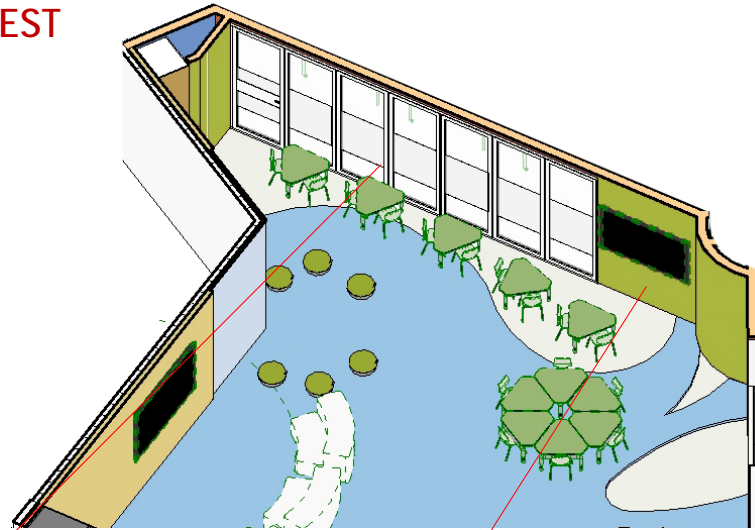
Platform seating with storage for stools



Acoustic panels with fiber optics as the night sky

REVIEW: FIS DESIGN

IDEATE – FOREST



Glass folding door with writable film – single panel

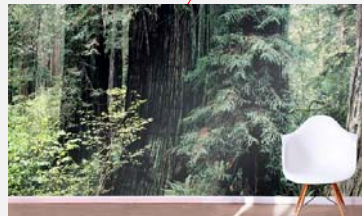


Photo realistic wall graphics of redwood forest



Translucent ceiling panel as tree canopies

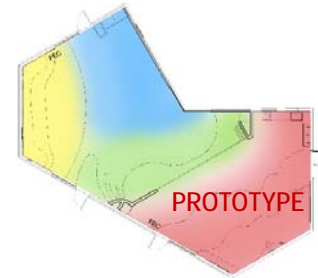
REVIEW: FIS DESIGN

IDEATE – FOREST



REVIEW: FIS DESIGN

PROTOTYPE - MARINE



Resilient flooring
representing coral reef



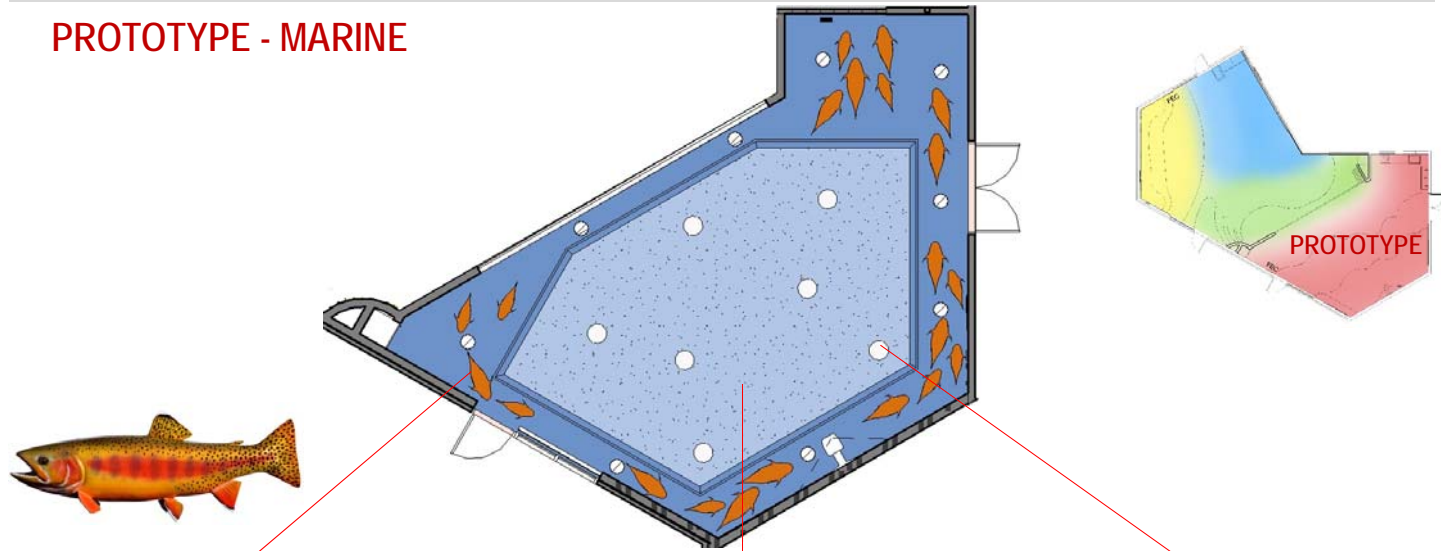
Writable projection surface -
interactive



Tackable panels with shapes
of sea animals

REVIEW: FIS DESIGN

PROTOTYPE - MARINE



Plexiglas with shapes of Golden Trout



Ceiling graphics of underside of ocean surface



Globe light

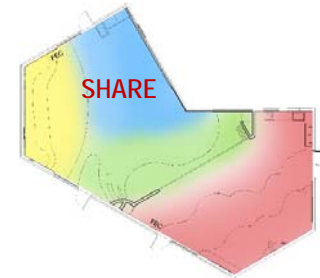
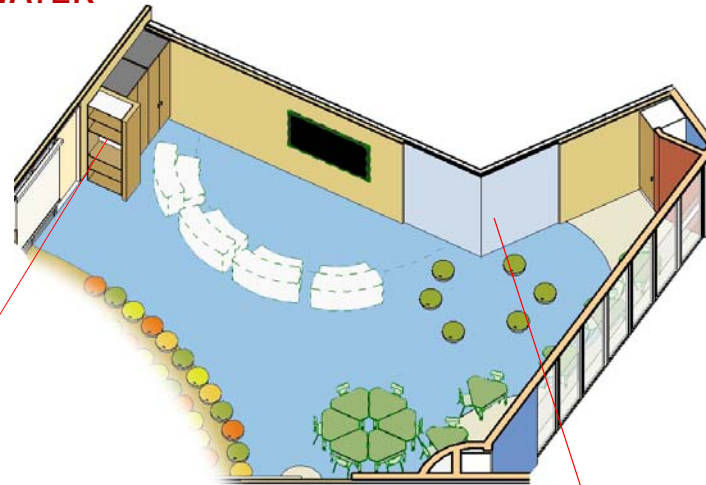
REVIEW: FIS DESIGN

PROTOTYPE - MARINE

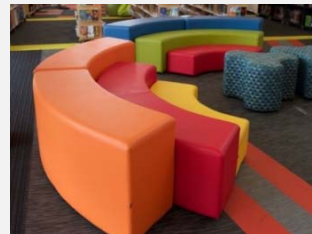


REVIEW: FIS DESIGN

SHARE - FRESHWATER



Display



Flexible furniture



Wall panel to mimic waterfall/ rain



Realistic water-effect

REVIEW: FIS DESIGN

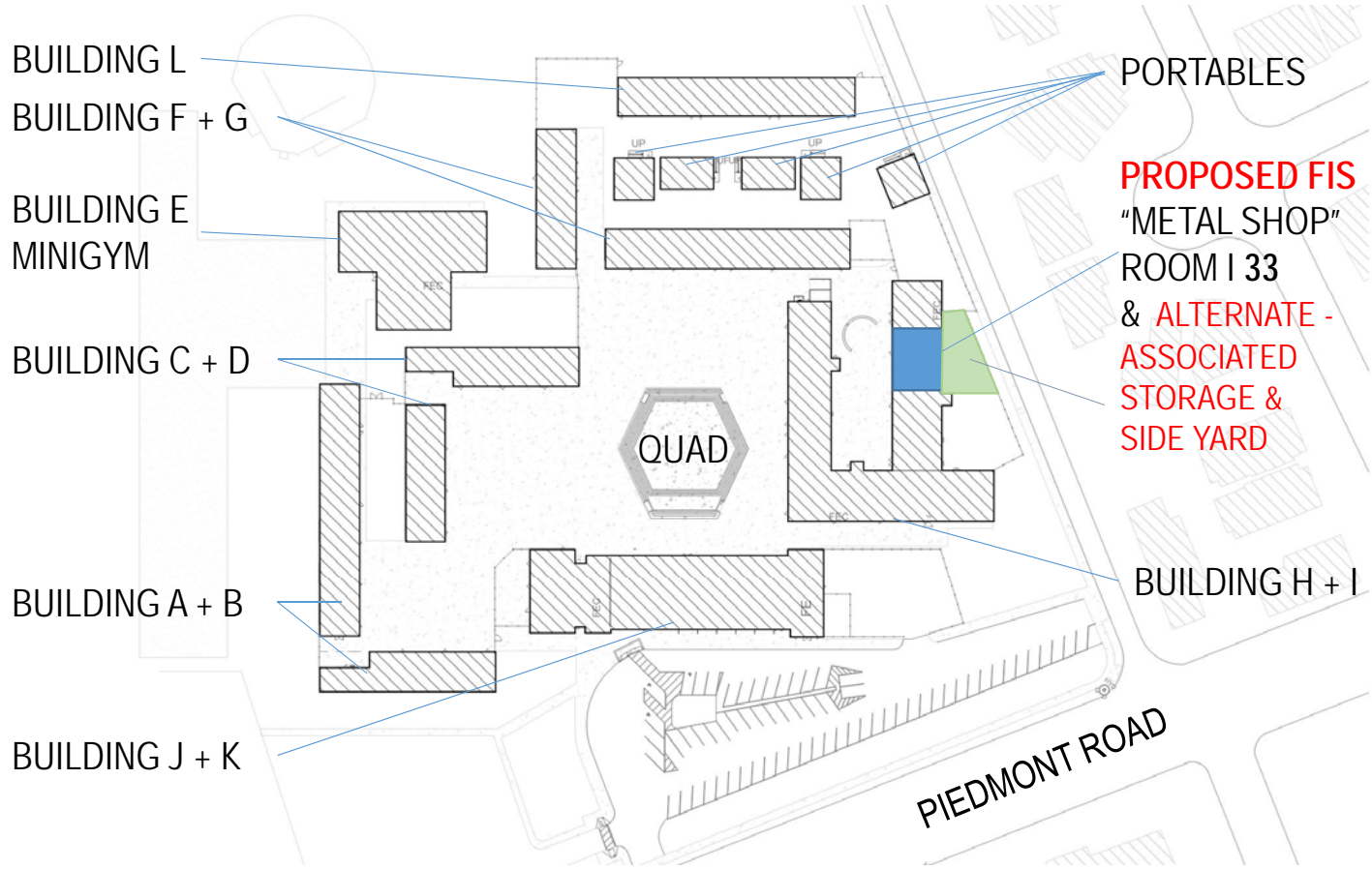
SHARE - FRESHWATER



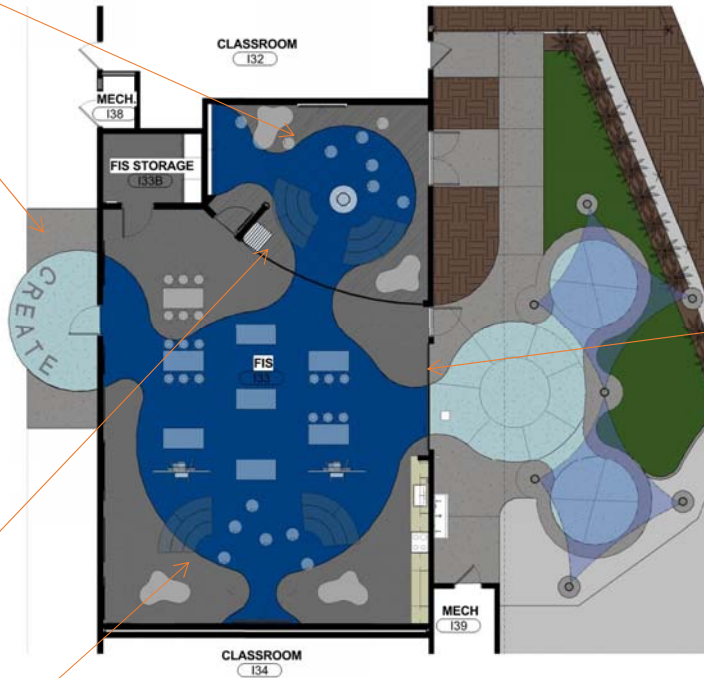
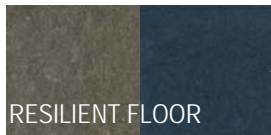
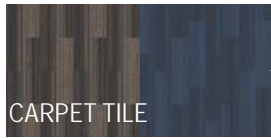


PIEDMONT MIDDLE SCHOOL
FLEXIBLE INSTRUCTION SPACE (FIS) AND CAMPUS MODERNIZATIONS
BERRYESSA UNION SCHOOL DISTRICT

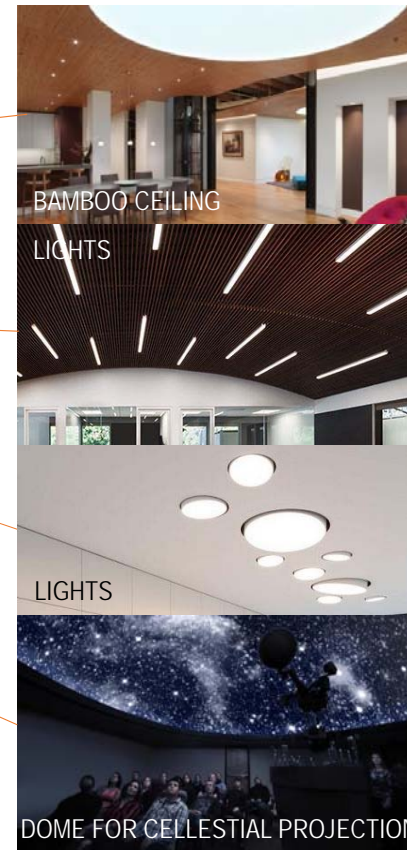
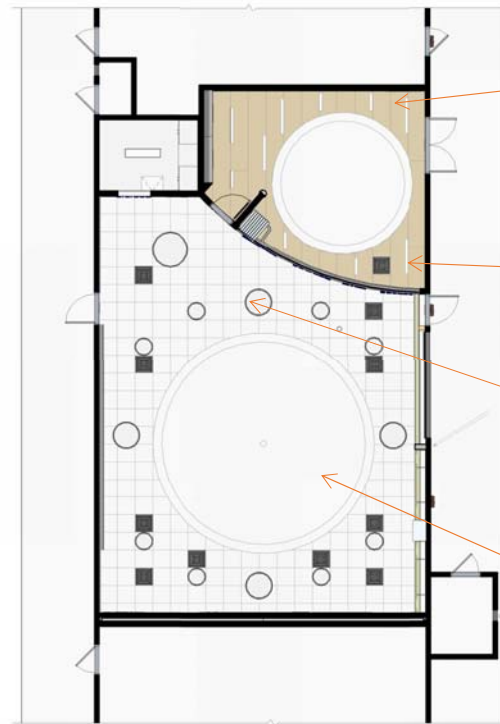
REVIEW: FIS LOCATION



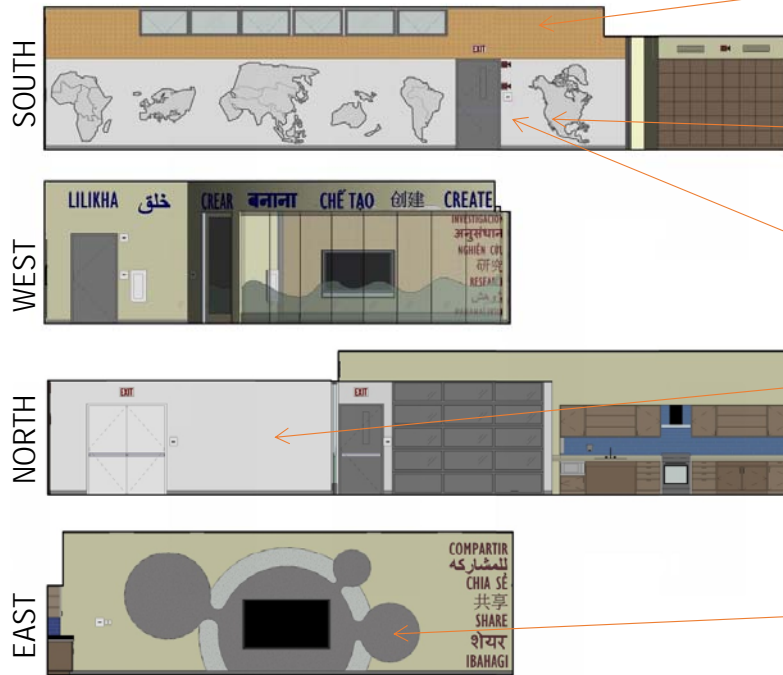
FIS / FLOOR PLAN MATERIALITY



FIS / CEILING PLAN MATERIALITY

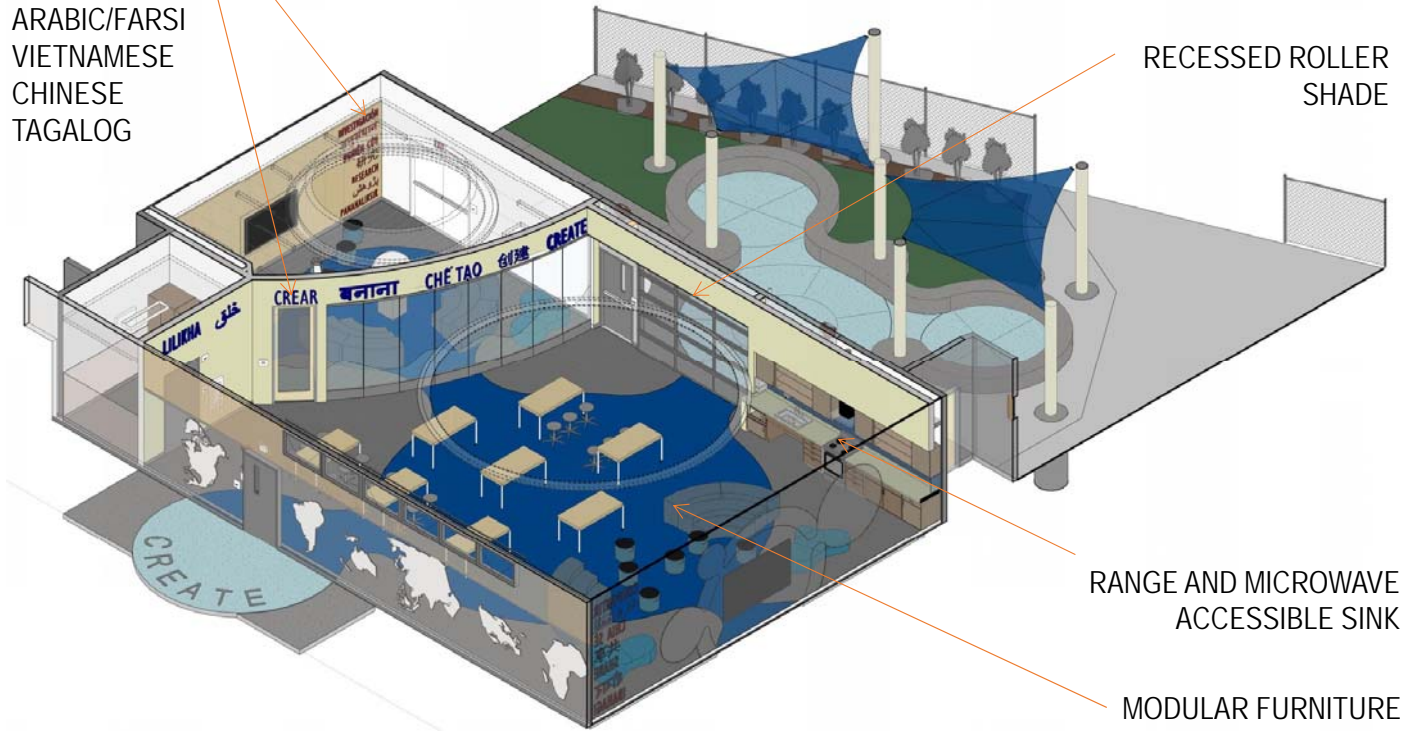


FIS / ELEVATIONS MATERIALITY



FIS / AXONOMETRIC VIEW NORTH

7 LANGUAGES:
ENGLISH
SPANISH
HINDI
ARABIC/FARSI
VIETNAMESE
CHINESE
TAGALOG



FIS / RENDER NORTH END - OPEN



FIS / RENDER SOUTH END



FIS / RENDER DOME PROJECTION



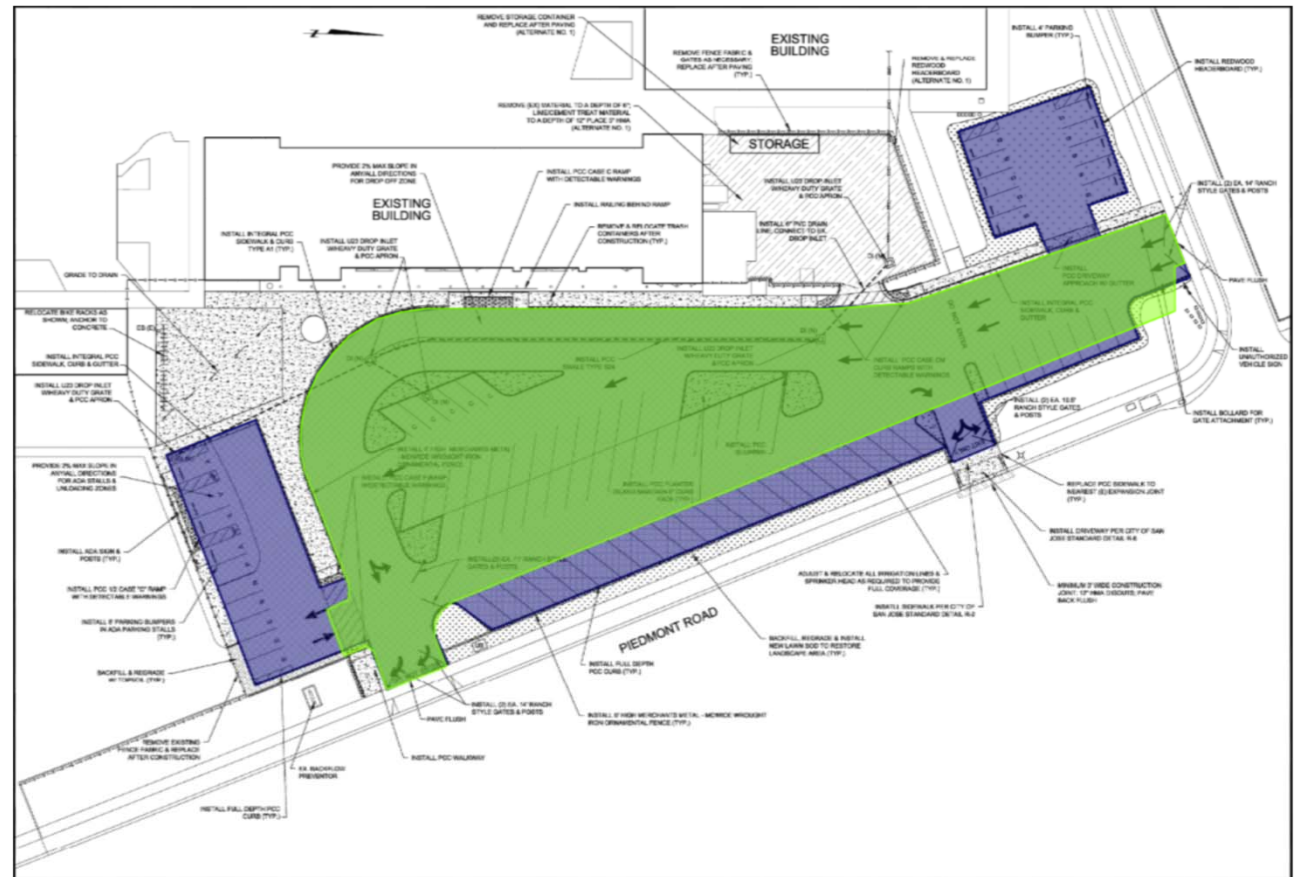
FIS / RENDER RESEARCH AREA



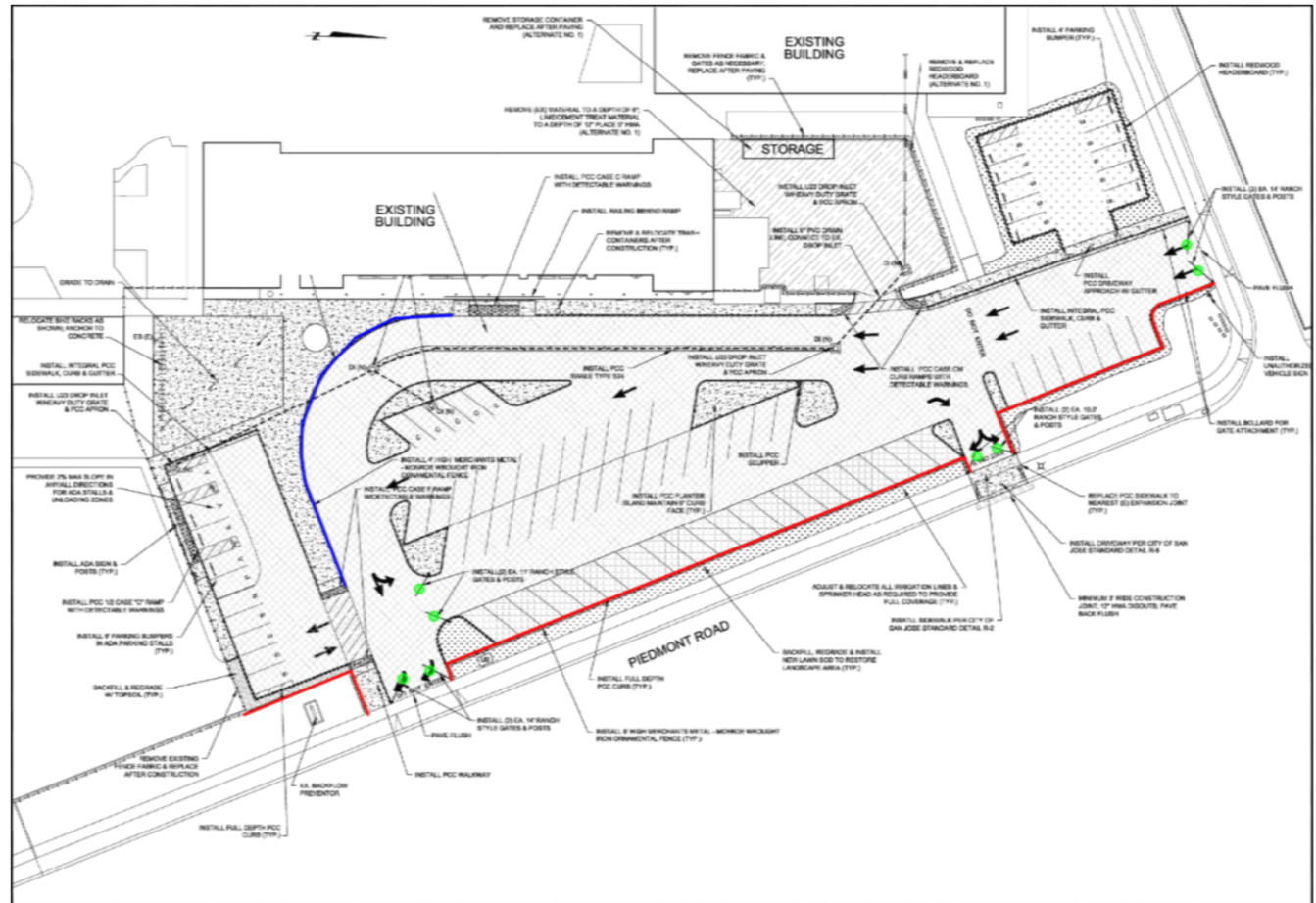
Piedmont Parking Lot Reconfiguration

Old parking lot layout
(green) compared to
new layout


Existing spaces 64
New spaces 79
 Additional spaces 15





Piedmont Parking Lot Reconfiguration



Legend

 4 foot high ornamental fence

 6 foot high ornamental fence

 Range (cattle) gate



Vinci Park

Thank You